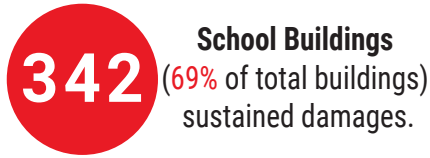


EDUCATION UNDER ATTACK

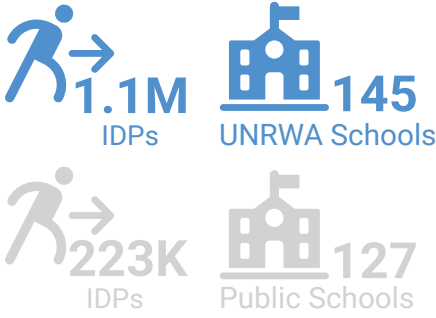
In the Gaza Strip

As of 5 December 2023

More than **625,000** students and **22,564** teachers in the Gaza Strip have been affected by school closures and attacks on education for **TWO** months with no access to education and a safe place.

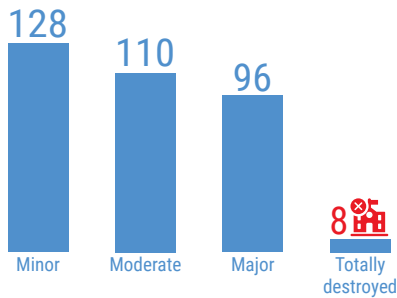


IDPs (using schools as shelters)

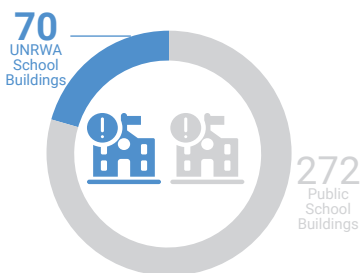


89% of total school buildings are either being used as IDPs shelters (almost four times their capacity) and/or sustained damage. This will constitute an additional burden to ensure the continuity of education when security condition allows, as they need rehabilitation, and cleaning works and many will continue to serve as IDPs centers for families who have lost their homes.

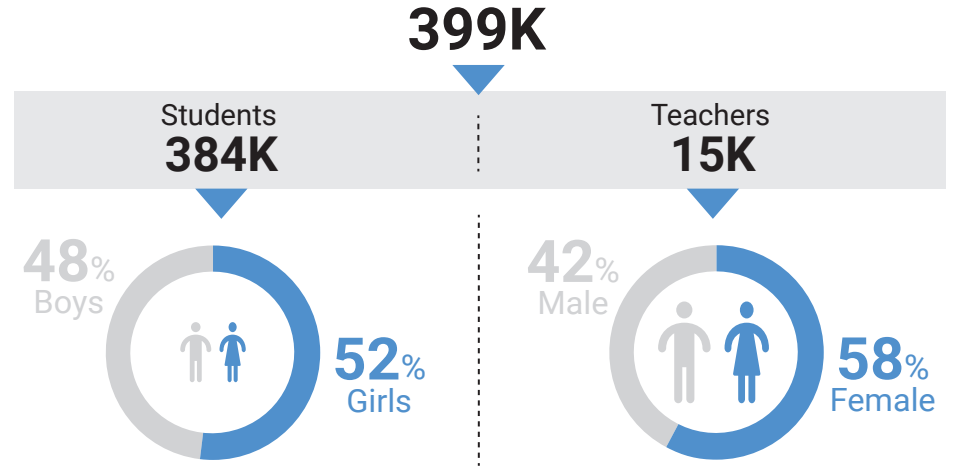
SEVERITY OF DAMAGE



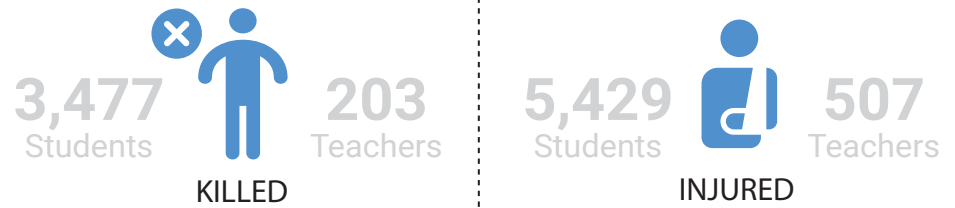
TYPE OF DAMAGED SCHOOL



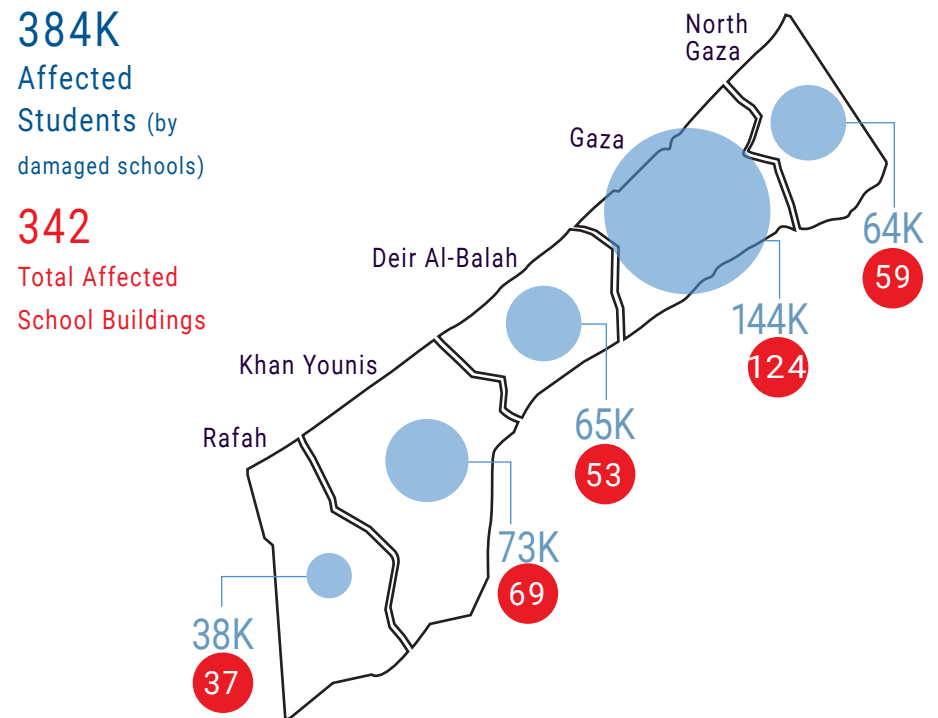
AFFECTED STUDENTS AND TEACHERS (directly affected by the damaged schools)



CASUALTIES (Numbers are based on MoE as of the 5th of December. Students age group is 6-17 years old)



GOVERNORATES



* The data sources: Cluster partners, UNOCHA, UNRWA and results of the observation exercise conducted by ECAT.
* The information presented in this report is based on initial data and has not yet all been verified by the Education Cluster Assessment Team (ECAT) due to the security situation.
* The buildings of three Directorate of Education and two MoE training centers and one storage sustained damages. One Rehabilitation Centre for Visually Impaired sustained minor damages, UNRWA Gaza Training College sustained severe damages, and Several university buildings sustained severe damages (all not counted in this report).
* Private schools and all kindergartens are not included in this report.
* For more details please visit oPt Education Cluster - Damaged Schools Dashboard - Gaza 2023