



## Rapid Observation Exercise

## Results presentation



- Exercise Concept Note
- ECAT
- Main Findings
- Recommendations
- Pictures

## Background:

- The recent hostilities in Gaza have resulted in **significant damage** to numerous schools, with many now serving as **Internally Displaced Persons (IDPs) centers**. The Education Cluster initiated a Rapid Observation Exercise to assess the **damage sustained** by these schools, evaluate the overall condition of **facilities**, identify **space** for temporary learning structures, and determine the availability of **trained personnel** for recreational activities.
- The Rapid Observation Exercise was conducted urgently during the 4 days humanitarian pause to verify damages and provide actionable information, enabling the Education Cluster and other stakeholders to respond effectively to the immediate needs of IDPs and plan for the recovery and reconstruction of education facilities in Gaza.

## Objectives:

- The key objectives of the Rapid Observation Exercise are as follows:
  1. **Validate the level of damage** reports and categorize schools based on the severity of damage (totally destroyed, major damage, moderate damage, minor damage).
  2. General overview of **school facilities** (including to evaluate the availability and functionality of water sources and sanitation facilities)
  3. Availability of **empty space** around the school premises (50-100 square meters) and suitability of these spaces for installing temporary structures to conduct educational and recreational activities.
  4. Mapping of availability of **trained personnel/teachers** to conduct educational and recreational activities for the wellbeing of the displaced children and communities.

## Methodology:

- Utilize a rapid and efficient data collection approach, combining on-site inspections with Key informant interviews (where possible)

## Sampling:

- Planned 25%, however the team was able to reach **37%** of the reported damaged schools in the South of Gaza Strip.

## Tool:

- <https://ee-eu.kobotoolbox.org/x/V16rQn53>

## The Education Cluster Assessment Team (ECAT):

- The EC Education Cluster Assessment Team (ECAT) was put on standby since the 1<sup>st</sup> week of the escalation. The ECAT was reactivated and deployed during the 4 days humanitarian pause to conduct this **Rapid Observation Exercise (25-27/11/2023)**

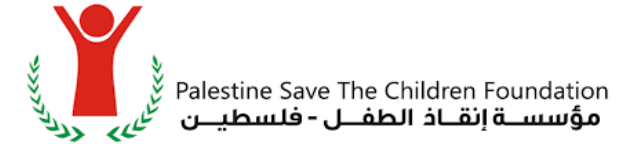
## Limitations:

- 5 teams (15 members) had been set to cover the 5 governorates of the Gaza Strip, however, due to the access limitation in Gaza and North Gaza governorates, **3 teams (12 members) from 7 partner organizations** deployed and conducted the assessments in three governorates (Middle Area, Khan Younis, and Rafah).
- Lack of fuel resulted in only using 3 vehicles to conduct the assessment, while the plan was to deploy at least 5 vehicles

## \* ECAT members who participated in the assessment:



Palestinian Save the Children Foundation (PSCF)



Save Youth Future Society (SYFS)



EducAid



Teacher Creativity Center (TCC)

مركز إبداع المعلم  
TEACHER CREATIVITY CENTER



UNDP

UNICEF

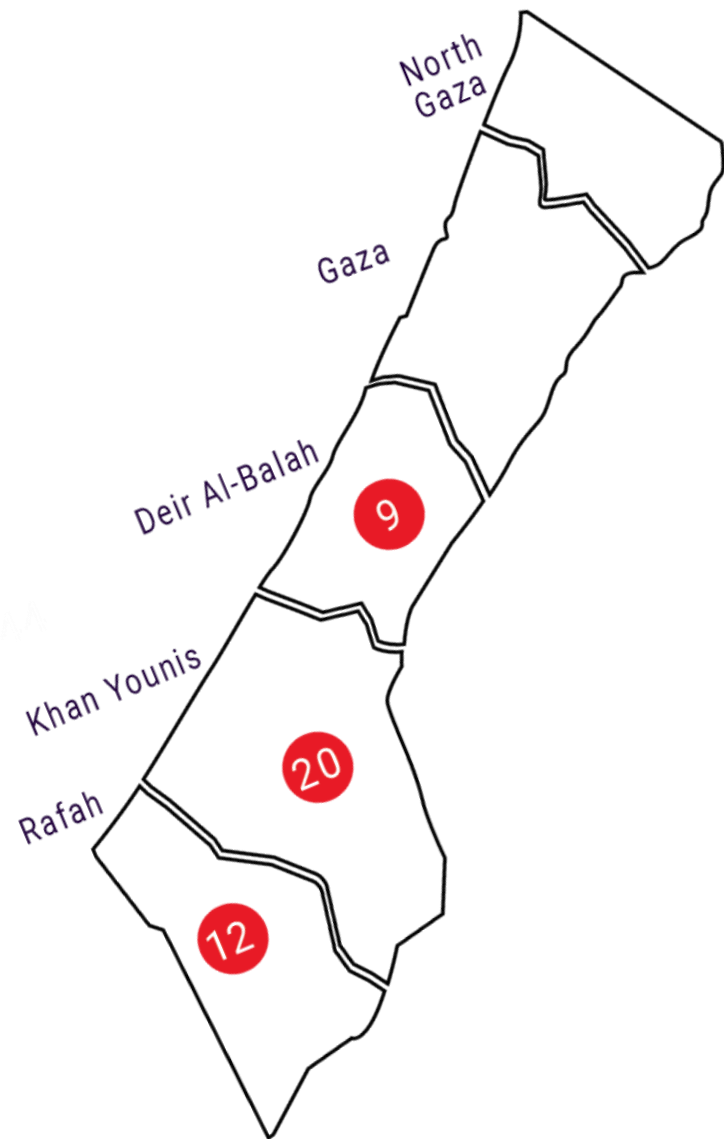


Education Cluster Coordinator

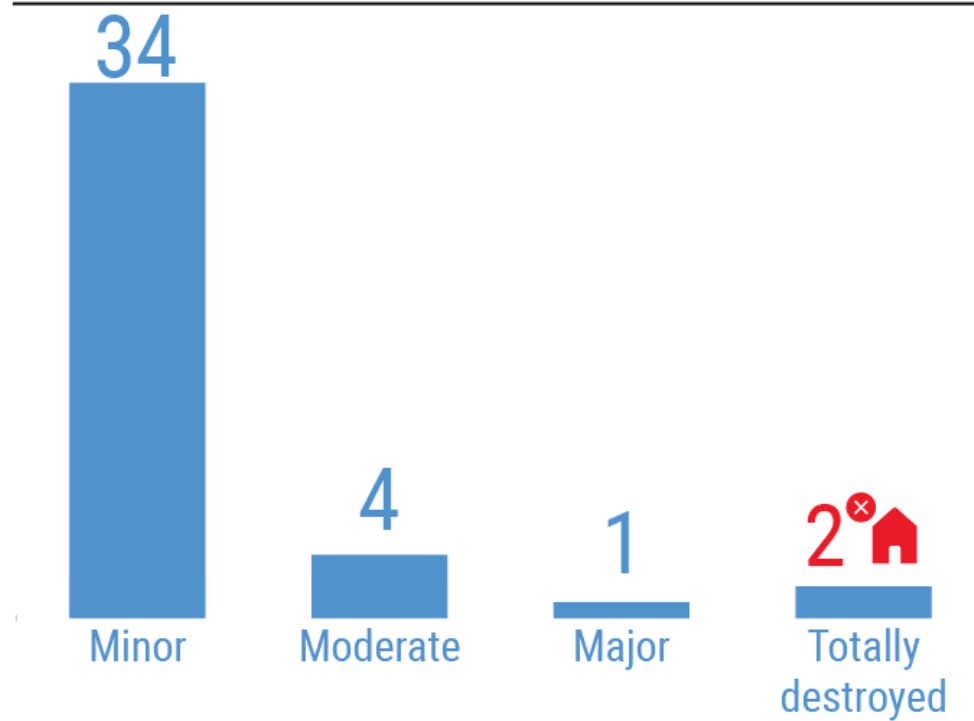


- In total, **41 Public** schools were assessed out of 111 with reported damages in the 3 Governorates in the south.
- **ALL** assessed schools sustained damage: **34** schools sustained **Minor damage**, **4** schools sustained **Moderate damage**, **One** sustained **Major damage**, and **TWO were totally destroyed**
- **3 of the assessed schools were hit directly**, and 16 schools were affected due to the bombing of close-by buildings

Type of damage	Explanation
Totally destroyed	Where the school building is demolished
Major damage	Where sever damage occurred to the building's body and infrastructure. The building still exists but is not usable.
Moderate damage	Where damage occurred to the building's body and infrastructure, but the building is still usable
Minor damage	Where damage occurred to windows, doors and other facilities, but the building is easily usable.

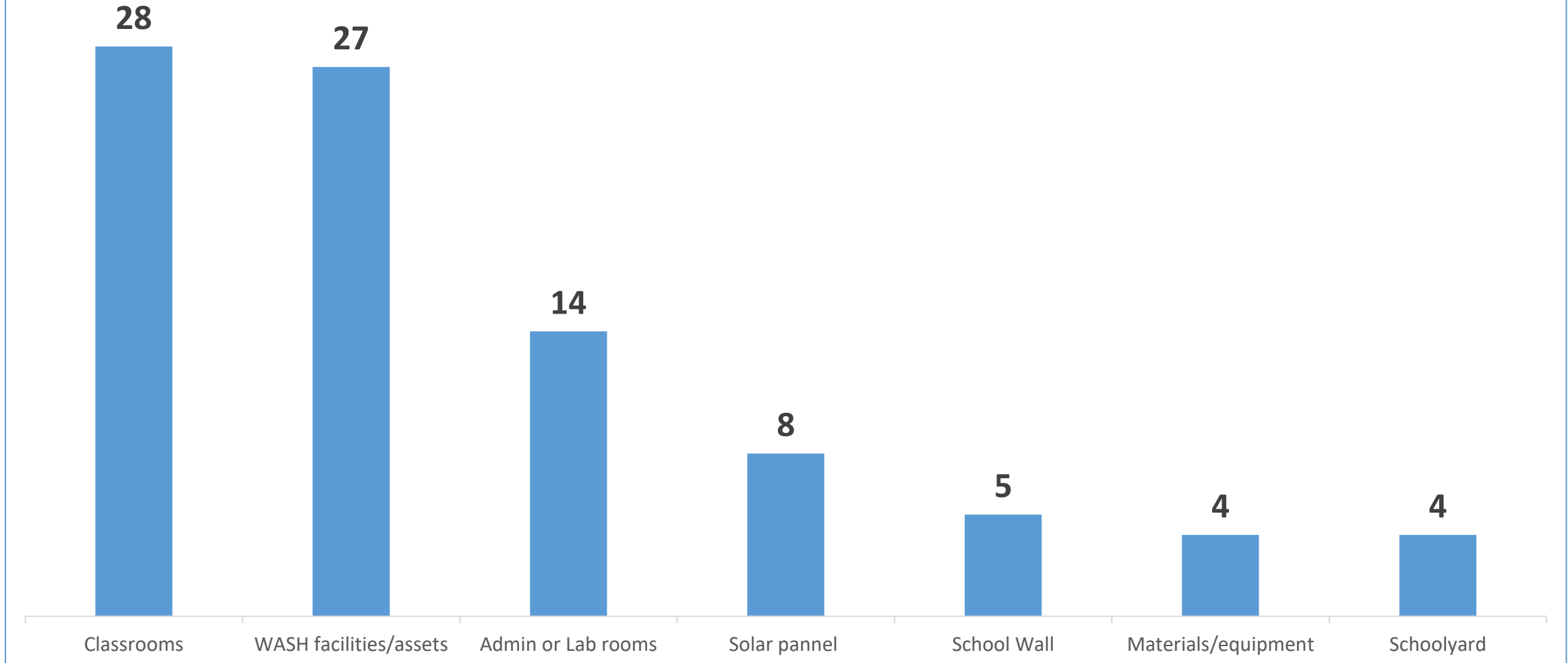


## SEVERITY OF DAMAGE





## Facilities that sustained damages



- The assessment teams did not observe any **UXOs** inside the assessed buildings.
- **85%** of the assessed schools were hosting IDPs at the time of the visit (around 66,000 IDPs total).
- **63%** of the assessed schools do not have access to safe drinking water.
- In all assessed schools, the number of IDPs is greater than the schools' capacity (only 3 were Designated Emergency Shelters - DESs - pre-crisis), affecting its facilities, especially the WASH facilities.
- # of functioning latrines, **WASH facilities** capacities and related needs were collected and will be shared with the WASH Cluster for follow-up.
- **474** persons/**children with disabilities** were identified in 33 of the assessed schools used as shelters.
- Many IDPs with **chronic diseases** live in the schools that were assessed, referrals will be made to the Health Cluster
- In **30 of the assessed schools**, the assessment teams observed **empty spaces** in the school surroundings to set up temporary structures to carry out activities for displaced people and children.
- In **13 of the assessed schools**, the team identified **82** displaced persons who were trained to carry out **recreational activities**.
- **190 teachers** were identified in **23 of the assessed schools**.

## **For the OPT Education Cluster coordination team:**

- Activate three task forces to coordinate the response, two immediately (MHPSS and recreational activities, Continuity of Education) and one at a later stage (School reconstruction and rehabilitation)
- Share and refer all relevant information collected during the exercise to WASH, Shelter and Health Clusters
- Continue with the assessment to cover all reportedly damaged schools depending on the security and availability of resources.

## **For the cluster and partners:**

- Prioritize schools to set up temporary learning spaces (TLSs) based on the assessed schools
- Work with UNRWA and Ministry of Education to identify all relevant teaching personnel and plans to continue formal learning in non formal settings
- Identify and mobilize appropriate personnel who have been trained in delivering recreational activities to expand partners' current response

## **For UNRWA and Ministry of Education:**

- Conduct a full teacher mapping in all IDP shelters in the 3 Southern governorates of Gaza, to be extended to shelters in Northern Gaza as soon as possible
- Working with Education Cluster partners and the future task force, prioritize schools to be rehabilitated/ reconstructed

## For Donors:

- Donors to prioritize education and to fund the Gaza Flash Appeal for Education. Education support is urgently needed to resume activities immediately and keep children in a safe and protective learning environment.
- Advocate for a Long-term ceasefire and the stop of the war, and advocate for safeguarding of schools, so they can be used for educational purposes and remain safe for children.

# Pictures



# Pictures





# Pictures

